

---

## Greenbelt Parcel Prioritization Project: Final Report, Town of Essex

### Introduction

With financial support from a 2019 Coastal Resiliency Grant from the MA Office of Coastal Zone Management, Greenbelt shared our most recent work to prioritize climate resilient parcels with the Town of Essex. While a number of different analyses were performed as a part of the overall prioritization project, this partnership focused on the results of Coastal Flood Mitigation, Inland Flood Mitigation, and Natural Resilience modules. Over the past 6 months, Greenbelt and the Town of Essex have met together to share these results, provide feedback on methods, discuss conservation tools, and explore ways to continue to partner in protecting climate-resilient land.

### Recap of First Meeting



The first meeting was held at Greenbelt's Cox Reservation on Thursday, January 23<sup>rd</sup>, 2020. Greenbelt presented on the prioritization project, and provided printed maps of results, parcel boundaries, and input data for representatives of the town to respond to.

## January Meeting Attendees:

### Essex County Greenbelt:

Chris LaPointe, Director of Land Conservation  
Abby Hardy-Moss, Conservation Planner & GIS Manager  
Maggie Brown, Project Manager  
David Heacock, Geographic & Technical Support Specialist

### Town of Essex:

Brendhan Zubricki, Town Administrator  
Nancy Dudley, Open Space Planning Committee  
Peter Phippen, Selectman  
Kim Drake, Community Preservation Committee Chair

### Office of Coastal Zone Management:

Kathryn Glenn, North Shore Regional Coordinator

Among the feedback that the attendees provided the two following observations stood out: 1) the combination of inland and coastal Flood Mitigation results as a single analysis was confusing, and 2) that evaluating parcels only for their current flood risk without factoring in future flood risk in the event of development was too limited. The Town of Essex noted the Manchester-Essex woods in the southern part of the town seemed to be undervalued in the results maps. While some of this was due to challenges associated with parcel data quality unique to the region, it was evident that this critically important area needed to be recognized for its conservation value.

This feedback was incorporated both into the analysis methods and mapping products of the prioritization. Through a revision process, Greenbelt modified analysis methods to better prioritize forested land cover for its flood mitigation benefits, and split the coastal and inland portions of the analysis into two separate models. In addition, two ‘focus areas’ were symbolized in the Natural Resilience map to represent sections of the Great Marsh and the Manchester-Essex woods, two regions that are recognized for their inherent conservation value. The second revision of maps for the town (included in this document) reflects these updates. These changes to the flooding analysis are incorporated into our countywide results and will be a part of this project going forward throughout the county.

### Final Meeting with Open Space Committee

On Thursday, June 4<sup>th</sup>, 2020, Greenbelt presented at Essex’s Open Space Committee meeting which, given the COVID-19 restrictions, was held virtually using Zoom. Greenbelt provided additional context for the use of prioritization results, demonstrated updates to the methodology, and provided an example of a conservation project that utilized prioritization data to increase its grant eligibility.

### Final Maps and Table

The maps and table below represent the results of the final prioritization analysis completed by Greenbelt to evaluate parcels for drinking water and flood mitigation value. The maps symbolize these priority levels through a graduated color symbolization. The table refers to these same results by referencing the LOC\_ID’s and MAP\_PAR\_ID’s of parcels as distributed from MassGIS and the Essex Assessors’ office.

### Conclusion

Greenbelt would like to thank the Town of Essex for their participation in this process. We are appreciative of the time and effort that went into the collaboration and for the valuable feedback that improved the quality of the final results. We look forward to partnering on future open space planning and conservation project opportunities.

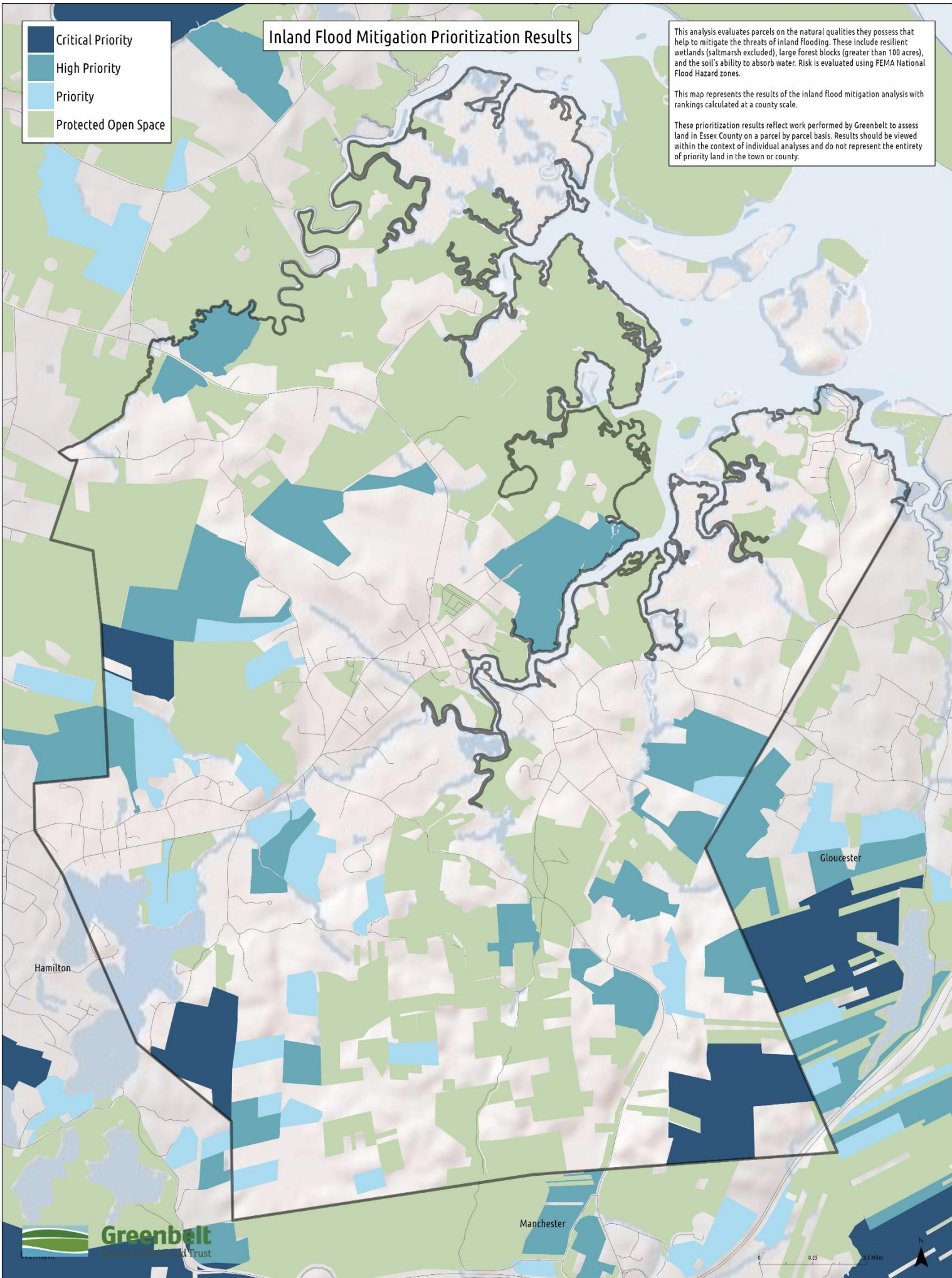
# Inland Flood Mitigation Prioritization Results

- Critical Priority
- High Priority
- Priority
- Protected Open Space

This analysis evaluates parcels on the natural qualities they possess that help to mitigate the threats of inland flooding. These include resilient wetlands (saltmarsh excluded), large forest blocks (greater than 100 acres), and the soil's ability to absorb water. Risk is evaluated using FEMA National Flood Hazard zones.

This map represents the results of the inland flood mitigation analysis with rankings calculated at a county scale.

These prioritization results reflect work performed by Greenbelt to assess land in Essex County on a parcel by parcel basis. Results should be viewed within the context of individual analyses and do not represent the entirety of priority land in the town or county.



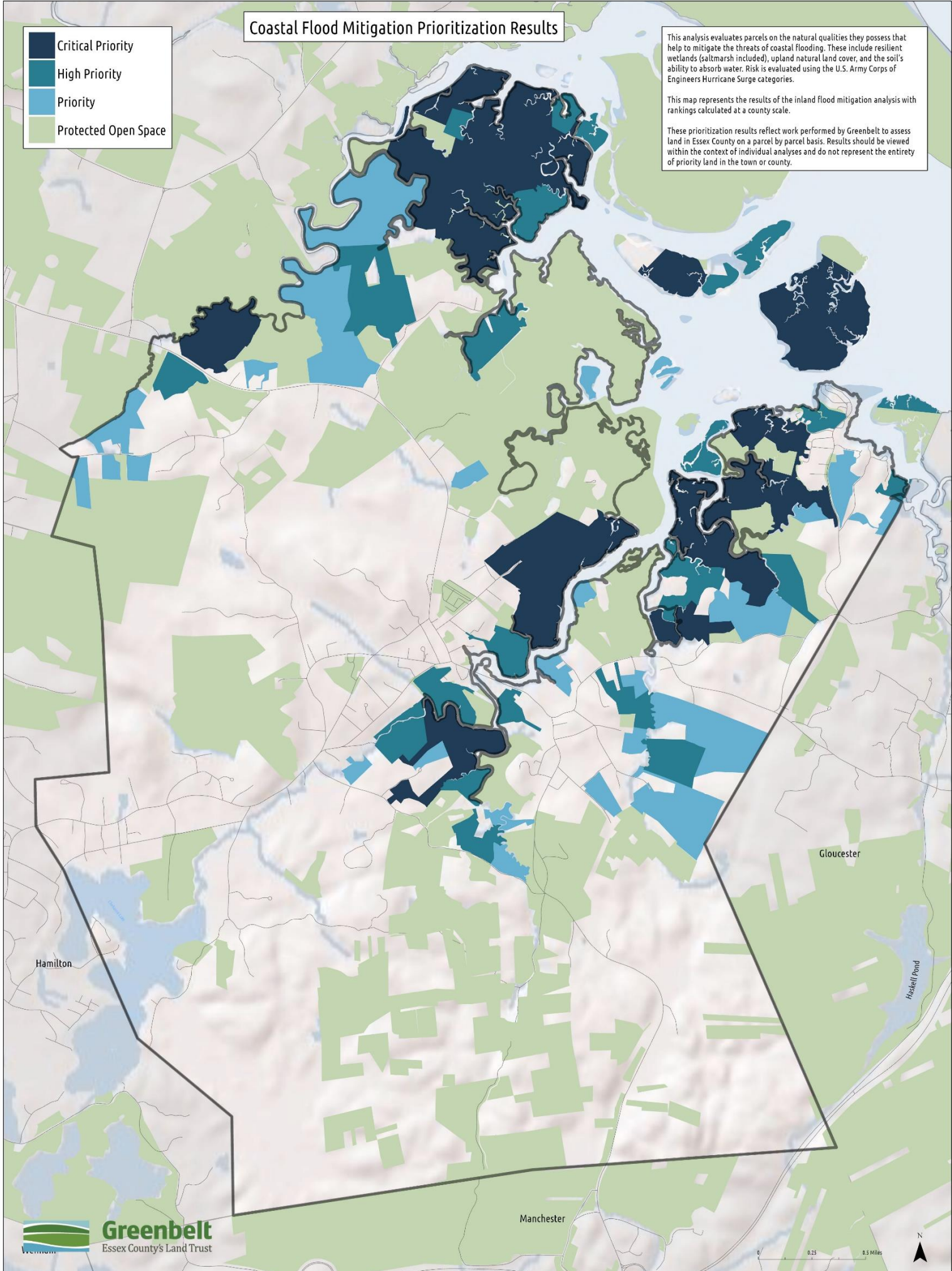
# Coastal Flood Mitigation Prioritization Results

- Critical Priority
- High Priority
- Priority
- Protected Open Space

This analysis evaluates parcels on the natural qualities they possess that help to mitigate the threats of coastal flooding. These include resilient wetlands (saltmarsh included), upland natural land cover, and the soil's ability to absorb water. Risk is evaluated using the U.S. Army Corps of Engineers Hurricane Surge categories.

This map represents the results of the inland flood mitigation analysis with rankings calculated at a county scale.

These prioritization results reflect work performed by Greenbelt to assess land in Essex County on a parcel by parcel basis. Results should be viewed within the context of individual analyses and do not represent the entirety of priority land in the town or county.



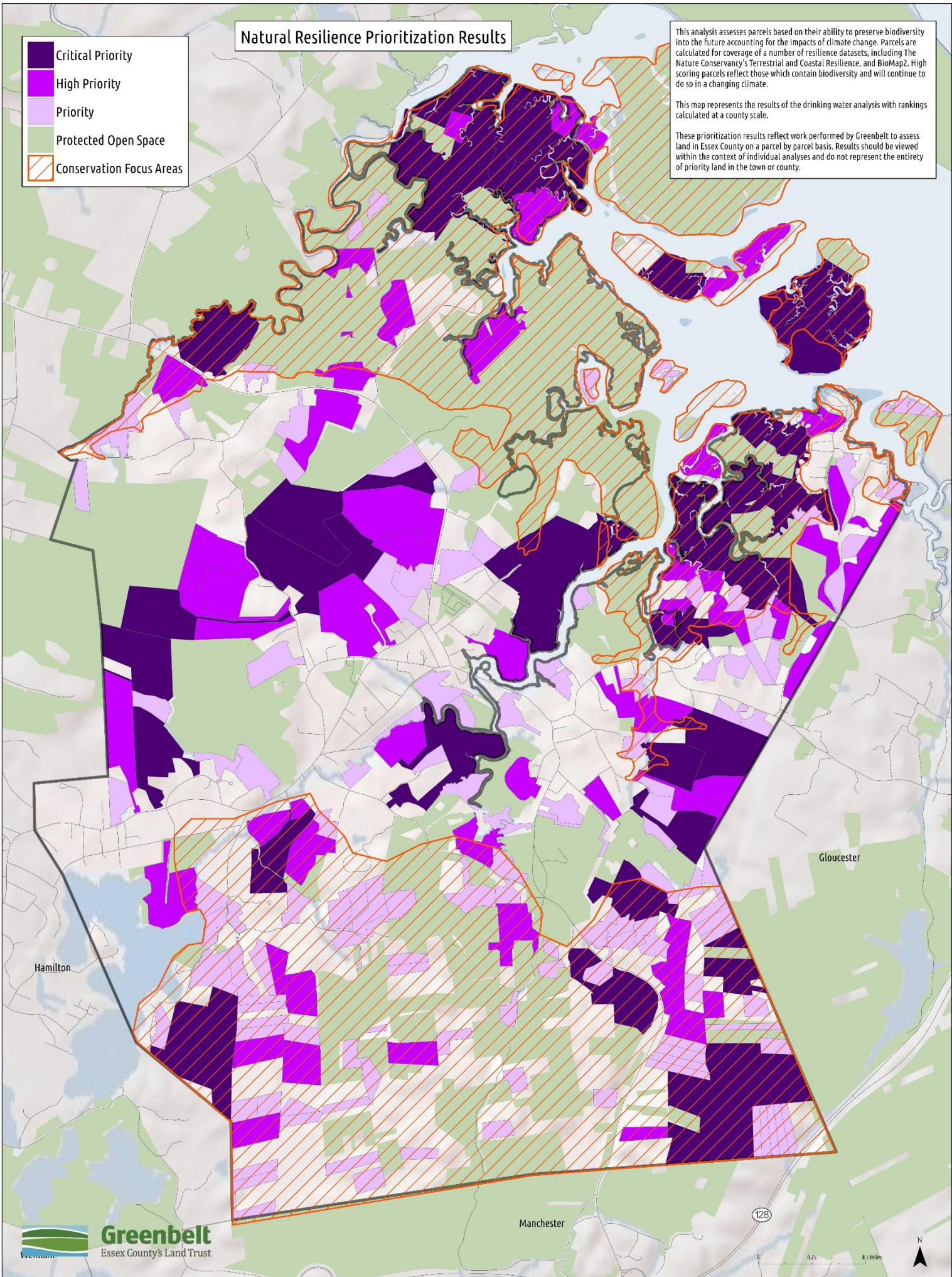
# Natural Resilience Prioritization Results

- Critical Priority
- High Priority
- Priority
- Protected Open Space
- Conservation Focus Areas

This analysis assesses parcels based on their ability to preserve biodiversity into the future accounting for the impacts of climate change. Parcels are calculated for coverage of a number of resilience datasets, including The Nature Conservancy's Terrestrial and Coastal Resilience, and BioMap2. High scoring parcels reflect those which contain biodiversity and will continue to do so in a changing climate.

This map represents the results of the drinking water analysis with rankings calculated at a county scale.

These prioritization results reflect work performed by Greenbelt to assess land in Essex County on a parcel by parcel basis. Results should be viewed within the context of individual analyses and do not represent the entirety of priority land in the town or county.



**Tabular Data:**

<b>LOC_ID</b>	<b>Map Par ID</b>	<b>Coastal Flooding</b>	<b>Inland Flooding</b>	<b>Natural Resilience</b>	<b>Address</b>	<b>Owner</b>	<b>Acres</b>
M_256250_932923	116-6	Priority		Priority	106 CHOATE ST	GILBERTSON CHRISTINA E TR	9.48
M_256379_933265	116-11	Priority		Priority	93 CHOATE ST	RUBIN JEFFREY B	5.05
M_256462_933035	116-3	Priority			98 CHOATE ST	LOEWE, MALLORY F	5.75
M_256528_931365	132-1		Priority	High Priority	0 WESTERN AVE REAR	KROESSER E JAMES TR	14.46
M_256530_930579	144-57			Priority	197 R WESTERN AVE	DAVIS, MICHAEL F TRUSTEE	11.14
M_256532_933309	116-14	Priority		Priority	83 CHOATE ST	PONY UP FARM, LLC	8.27
M_256555_930968	144-59		High Priority	High Priority	0 WESTERN AVE	SOLOMBRINO SCOTT TR	25.30
M_256638_933041	115-25	Priority			84 CHOATE ST	STONE, STEPHEN J	7.92
M_256641_933478	104-1	Priority		Priority	81 A CHOATE ST	PLOSKER MATTHEW	8.57
M_256705_931626	133-3		Critical Priority	Critical Priority	0 COUNTY RD REAR	SOLOMBRINO SCOTT A	50.35
M_256784_931286	133-2			Priority	0 COUNTY RD	SOLOMBRINO SCOTT A	9.14
M_256806_930926	133-1		Priority	Critical Priority	25 COUNTY RD	SOLOMBRINO SCOTT A	41.81
M_256849_928863	157-4			Priority	0 WOOD DR	JOHNSON, DALE	7.36
M_256877_931965	130-2		High Priority	Critical Priority	30 BELCHER ST	GATELY, SARAH S	46.42
M_256965_933721	105-19	High Priority	High Priority	High Priority	234 JOHN WISE AVE	234 JOHN WISE AVE LLC	19.68
M_256978_933499	105-11			Priority	53 CHOATE ST	GONZALES, SCOTT	6.17
M_257019_929884	146-20		Priority	High Priority	0 CENTENNIAL GROVE	TOWN OF ESSEX	37.19
M_257165_929296	154-10			Priority	38 WOOD DR	JOHNSON DALE TR	8.77
M_257171_928737	157-5		Critical Priority	Critical Priority	0 WOOD DR	OWNER UNKNOWN	86.91
M_257180_931987	130-3		High Priority	High Priority	32 BELCHER ST	GEORGOULAKOS JAMES	18.97
M_257208_929838	146-13			Priority	51 POND ST	BRUCE, WILLIAM A	10.22
M_257282_934029	103-5	Critical Priority	High Priority	Critical Priority	219 JOHN WISE AVE	SINGLETON, SHIRLEY	50.04
M_257284_932419	118-3		High Priority	High Priority	72 BELCHER ST	SCHYLLING JACK R & SHELAGH TR	28.41
M_257291_930861	133-5			Priority	7 R COUNTY RD	MEANS, RICHARD L	7.96
M_257292_929685	146-12			Priority	57 POND ST	IRVING, GEORGE G	8.52
M_257315_929277	154-5			Priority	0 WOOD DR	TOWN OF ESSEX	10.24
M_257341_932116	118-1		High Priority	High Priority	34 BELCHER ST	GEORGOULAKOS, JAMES C	28.11
M_257406_929705	146-11			Priority	60 POND ST	EURICH, DANIEL G	5.06
M_257466_929217	154-4			Priority	65 R POND ST	TYACK, ROBERT S	11.32
M_257472_928257	211-2		High Priority	Priority	0 ESSEX WOODS	OWNER UNKNOWN	7.64
M_257474_931834	130-1		Priority	High Priority	30 A BELCHER ST	ARCHULETA LAURA CUTLER	21.30
M_257544_927495	211-10			Priority	0 ESSEX WOODS	TOWN OF ESSEX	7.23

M_257549_927725	211-8		Priority	Priority	0 ESSEX WOODS	OWNER UNKNOWN	6.25
M_257549_927804	211-7		Priority	Priority	0 ESSEX WOODS	DOUCETTE, RICHARD A JR	7.00
M_257552_930787	142-35		Priority	Priority	125 WESTERN AVE	TYACK, ROBERT S	17.70
M_257554_928102	211-3		High Priority	High Priority	0 ESSEX WOODS	OWNER UNKNOWN	17.22
M_257569_933773	105-26	Priority		Priority	191 JOHN WISE AVE	BANCROFT WILLIAM M JR	6.92
M_257575_928701	210-56		Priority	High Priority	0 ESSEX WOODS	OWNER UNKNOWN	16.78
M_257586_928837	210-55			Priority	0 ESSEX WOODS	OWNER UNKNOWN	7.60
M_257595_929083	153-31			Priority	0 RUST PASTURE	BURNHAM, WESTLEY/MICHAEL/DAN	5.18
M_257599_929026	210-52			Priority	0 ESSEX WOODS	OWNER UNKNOWN	5.03
M_257610_928915	210-54			Priority	0 ESSEX WOODS	OWNER UNKNOWN	6.14
M_257615_929335	153-37			Priority	0 POND ST	LYONS-MONTGOMERY JOHN JEROME	9.81
M_257647_930383	142-31		Priority	High Priority	0 ESSEX PARK RD	VAN WYCK, PETER & ORESTES BRWN	16.39
M_257659_928298	212-101		Priority	Priority	0 ESSEX WOODS	OWNER UNKNOWN	6.74
M_257666_931589	129-18		Priority	Priority	4 BELCHER ST	ADAMS, ROLAND T	19.71
M_257689_930171	142-30		High Priority	Critical Priority	0 ESSEX PARK RD	VAN WYCK, PETER & ORESTES BROW	33.34
M_257727_929319	153-32			High Priority	101 POND ST	FLYNN, MICHAEL	10.20
M_257736_932357	119-7			Critical Priority	16 TREE HILL	PRATT, ELIZABETH F TRUSTEE	86.90
M_257810_933075	114-2			Priority	0 BELCHER ST REAR	PATRICAN, BRIAN J	7.71
M_257855_933398	106-5			Priority	158 JOHN WISE AVE	STOREY JOAN A LIFE ESTATE	12.73
M_257864_928268	212-98		Priority	Priority	0 ESSEX WOODS	GALE, KYLE TRUSTEE	5.40
M_257864_929776	147-28			Priority	2 ROCKY HILL RD	RAMSEY, JAMES V JR	8.93
M_257865_932715	113-3		High Priority	Critical Priority	94 JOHN WISE AVE	KELLERMAN, PETER	82.40
M_257890_928187	212-97		Priority	Priority	0 ESSEX WOODS	TOWN OF ESSEX	5.97
M_257902_928604	210-50		High Priority	High Priority	0 MANCHESTER WOODS	GALE, JOHN	21.46
M_257905_928823	210-51.2			Priority	105 POND ST	GALE, JOHN	8.30
M_257905_929125	210-51		Priority	High Priority	105 ESSEX WOODS	GALE, JOHN	17.44
M_257949_930123	147-19		Priority	High Priority	0 POND ST REAR	VAN WYCK, PETER & ORESTES BROW	31.77
M_258086_930391	142-16			Priority	1 TARA RD	SPOFFORD, CLAIRE F	6.53
M_258110_934103	106-17	Priority		High Priority	143 JOHN WISE AVE	STOREY, CHARLES M	85.35
M_258181_932009	129-50			High Priority	21 WESTERN AVE	DUNCAN, MARY E S	56.80
M_258183_929748	147-32			Priority	26 ROCKY HILL RD	FERRIERO, PETER A	9.17
M_258207_933503	106-2			High Priority	158 JOHN WISE AVE	STOREY JOAN A LIFE ESTATE	32.56

M_258230_928292	212-64			Priority	0 ESSEX WOODS	TOWN OF ESSEX	5.51
M_258272_929538	153-6			Priority	35 ROCKY HILL RD	GLASS KEVIN D	7.93
M_258278_927858	212-73			Priority	0 ESSEX WOODS	TOWN OF ESSEX	8.27
M_258280_928800	210-46			Priority	0 ESSEX WOODS	GALE, JOHN	22.25
M_258285_934634	203-4	High Priority		High Priority			11.22
M_258302_930777	142-6	Priority		Priority	24 APPLE ST	CARLSON JANET	6.03
M_258311_929798	147-33			Priority	34 ROCKY HILL RD	BEDIZ, JOHN R	8.93
M_258395_935000	203-3	Priority		Priority	0 PODS ISLAND	SHURCLIFF, CHARLES H	78.90
M_258408_927728	212-79		Priority	Priority	0 ESSEX WOODS	TOWN OF ESSEX	8.16
M_258417_928497	210-40			Priority	0 RATTLESNAKE BROOK	TOWN OF ESSEX	7.40
M_258430_929792	147-34		Priority	Priority	42 ROCKY HILL RD	CARPENTER, MARY H	14.46
M_258480_934300	101-1	High Priority		High Priority	36 ISLAND RD	FIRST TUCSON LLC	55.77
M_258481_932242	119-8			Priority	15 TREE HILL	PRATT, ELIZABETH F	22.99
M_258587_932725	120-6			High Priority	50 JOHN WISE AVE	HARDY-WYATT, L LORRAINE TRSTEE	59.35
M_258610_929774	148-10			Priority	48 ROCKY HILL RD	WINFREY, STUART E II	14.63
M_258640_933100	113-4			Priority	94 JOHN WISE AVE	KELLERMAN, PETER L & M BENOTTI	12.74
M_258658_930998	135-26	High Priority		High Priority	30 LANDING RD	TOWN OF ESSEX	21.23
M_258673_931172	135-17	High Priority		Priority	0 MARTIN ST REAR	TOWN OF ESSEX	5.68
M_258678_932493	120-5			High Priority	34 JOHN WISE AVE	MARLIN CAPITAL CORP	20.88
M_258680_929387	152-21.2			Priority	0 ROCKY HILL RD	GALE KYLE TR	6.01
M_258683_929313	152-21.3			Priority	0 VARNEY WOODS	GALE KYLE TR	5.96
M_258740_928681	210-33		Priority	High Priority	0 CANDLEWOOD HILL	BURNHAM, FRANCIS C	15.30
M_258772_932224	120-4			Priority	22 JOHN WISE AVE	GINN MICHAEL W & JAYNE C	14.13
M_258780_927930	212-43			Priority	0 ESSEX WOODS	TOWN OF ESSEX	5.65
M_258874_930881	141-4	Priority		Priority	18 LOW LAND FARM RD	BEARDSLEY SUSAN J TR	5.67
M_258962_931348	128-1	High Priority		Priority	30 MARTIN ST	TOWN OF ESSEX	16.60
M_258982_930725	141-9	Critical Priority		Critical Priority	1 LOW LAND FARM RD	MCKINNON MATTHEW J	54.78
M_259046_928816	210-27			Priority	0 ESSEX WOODS	OWNER UNKNOWN	7.06
M_259056_932337	120-12			Priority	35 JOHN WISE AVE	CEDAR BROOK FARM	14.17
M_259061_935623	203-1.1	High Priority		High Priority	0 BROAD MARSH	BEGIN JEFFORY D	7.04
M_259118_931230	135-9	High Priority		Priority	0 MAIN ST REAR MARSH	STORY, JONATHAN	6.70
M_259143_930667	141-16	High Priority		Priority	0 APPLE ST REAR	TOWN OF ESSEX	11.04
M_259154_932980	113-16	Priority		Priority	69 JOHN WISE AVE	SCOFIELD, JULIE M	8.18
M_259166_929844	148-6			Priority	95 APPLE ST	ZIDE, LENARD B	16.84
M_259225_934005	101-31	High Priority		High Priority	1 LOWS ISLAND	PHIPPEN WM/JOANNA/PETER TR	8.24
M_259228_930192	148-3	High Priority		High Priority	102 APPLE ST	GIBSON, CHRISTOPHER	18.30



M_259248_933855	101-30	High Priority		High Priority	0 LOWS ISLAND & MARSH	GALE, KYLE TRUSTEE	7.96
M_259266_932470	120-25			Priority	0 SPRING ST	SOCIETY FOR THE PRESERVATION	8.41
M_259266_934706	203-7	Critical Priority		Critical Priority			186.21
M_259368_928109	212-2			Priority	0 ESSEX WOODS	NEW ENGLAND POWER	6.91
M_259375_930436	140-59	Priority		Priority	99 SOUTHERN AVE	MEARS BARRY M	7.66
M_259392_935326	204-1	Critical Priority		Critical Priority	0 BROAD MARSH	BARNETT RICHARD H	23.78
M_259431_934112	101-33	High Priority		High Priority	28 JOHN WISE LN	MOORE JUSTIN	13.99
M_259444_929873	149-18			Priority	125 APPLE ST	ZIDE LENARD B TRS	6.29
M_259445_930075	149-20	Priority		Priority	128 APPLE ST	CORNFIELD, EUGENE L	10.23
M_259447_931664	127-2	High Priority		High Priority	35 DODGE ST	35 DODGE STREET LLC	22.07
M_259455_928984	209-73			Priority	1 OLD MANCHESTER RD	PEDERSEN, KIM	6.61
M_259463_930731	140-71			High Priority	1 NOAH'S HILL LN	TYLER WILLIAM B JR &	44.27
M_259471_931226	136-133	High Priority		Priority	119 MAIN ST	WOODMANS, INC	10.72
M_259485_929632	149-12		High Priority	High Priority	3 ANDREWS ST	ANSARA, JAMES S	26.89
M_259502_928478	209-70			Priority			6.88
M_259561_935229	204-5	Critical Priority		Critical Priority	0 HARDYS CREEK MARSH	TOWN OF ESSEX	45.77
M_259591_934886	204-7	High Priority		High Priority	0 HARDYS CREEK	UNKNOWN	12.15
M_259607_935588	204-2	Critical Priority		Critical Priority	0 ROBBINS COVE	BABSON DAVID E & WILLIAM CO-TR	33.37
M_259703_935052	204-6	High Priority		High Priority	0 SALT MARSH	BROPHY ROBERT	13.02
M_259736_930553	140-31			Priority	86-86 R SOUTHERN AVE	RENZI, MARK	10.63
M_259744_931565	127-6	Priority		Priority	34 WATER ST	HENDERSON J E/M C LIFE ESTATE	5.50
M_259748_929279	151-14			Priority	21 KING'S CT	DAVIS, A DAVID	23.97
M_259780_932291	121-2	Critical Priority	High Priority	Critical Priority	60 SPRING ST	SOCIETY FOR THE PRESERVATION	124.11
M_259857_931459	127-4	Priority		Priority	26 WATER ST	NONIS THOMAS G TR	5.84
M_259885_935618	204-3	High Priority		High Priority	0 ROBBINS COVE MARSH	BABSON DAVID E & WILLIAM CO-TR	10.45
M_259931_930277	140-55			Priority	96 SOUTHERN AVE	JEFFRIES, EDWARD F	35.03
M_260007_932092	121-4	Priority		Priority	82 R EASTERN AVE	APPLETON, SAMUEL	6.24
M_260057_933701	207-8	Priority		Priority	0 ISLAND MARSH	OWNER UNKNOWN	5.86
M_260126_929277	151-10			Priority	179 SOUTHERN AVE	FUNKHOUSER, ERICA	7.04
M_260133_935516	204-4	High Priority		High Priority	0 HARDYS CREEK MARSH	TOWN OF ESSEX	8.29
M_260142_929604	151-1			Priority	180 SOUTHERN AVE	FILIAS, JOHN C	8.69
M_260153_930588	140-23	Priority		High Priority	9 MILK ST	ESSEX WILLOWBROOK FARM LLC	10.52
M_260174_928346	213-19			Priority	105 SOUTHERN AVE	GENEST, RETA M	5.67
M_260299_929507	151-5			Priority	184 SOUTHERN AVE	RAMSEY, BRETT & BRUCE C, TRS	6.25

M_260306_929638	151-4			Priority	182 SOUTHERN AVE	HOARE HENRY P	6.33
M_260323_931293	127-22	High Priority		High Priority	73 EASTERN AVE	COUGHLIN, JOHN E & JOSEPH P TR	20.53
M_260380_929865	150-12		High Priority	Critical Priority	0 SOUTHERN AVE REAR	GLOVSKY, MARK B, TR	37.55
M_260394_930985	137-37	Priority		Priority	0 GROVE ST	JENKINS, PRESTON	7.22
M_260398_931428	137-34	Priority		Priority	83 R EASTERN AVE	DUDLEY, BENJAMIN A	5.71
M_260405_929061	151-9		High Priority	Critical Priority	0 SOUTHERN AVE	BEAL, THADDEUS R	47.25
M_260462_928080	213-10			High Priority	280 SOUTHERN AVE	GARDNER, MARTHA K, TRUSTEE	8.20
M_260474_929606	209-8			Priority	0 SOUTHERN AVE	OWNER UNKNOWN	6.39
M_260546_929475	209-7			Priority	0 SOUTHERN AVE REAR	LANTNER, STEVEN A	6.67
M_260555_930229	139-9			Priority	83 FOREST AVE	FEBIGER, WILLIAM S II & ANN E	38.75
M_260569_930671	139-2			Priority	0 GROVE ST	NADAI DEIRDRE TR/J EMERSON TR	5.30
M_260578_929962	150-11			Priority	0 SOUTHERN AVE REAR	PENNOYER, CECILY	9.57
M_260580_930517	139-5	Priority		Priority	68 GROVE ST	NADAI DEIRDRE TR/J EMERSON TR	10.04
M_260597_933823	207-3	Priority		Priority	0 BULL ISLAND	DUNCAN, MARY E S	5.39
M_260640_931233	137-28	Priority		High Priority	11 HASKELL CT	GERTSCH, EMIL A & KARIN M, TRS	12.57
M_260684_929100	209-14		Priority	High Priority	0 SOUTHERN AVE	TOWN OF ESSEX	11.59
M_260689_930852	137-25	High Priority	High Priority	Critical Priority	32 HASKELL CT	MILLS, DANIEL QUINN TR	28.99
M_260690_929346	209-15		Priority	High Priority	0 LAUREL LN	STORY, CELESTRA F	13.19
M_260698_932036	126-16	High Priority		High Priority	0 ABELS ISLAND SHORE MARSH	CARY, JOHN R	7.24
M_260709_934498	204-19	Critical Priority		Critical Priority			26.98
M_260717_928560	209-35			Priority	0 SOUTHERN AVE REAR	DEMETER, STEVEN C	6.71
M_260731_928615	209-34			Priority	0 FANNY STORY LOT	DEMETER, STEVEN C	6.25
M_260738_932289	122-2	High Priority		High Priority			10.10
M_260742_929581	209-12			High Priority	0 SOUTHERN AVE REAR	HENDERSON, DEIRDRE	7.82
M_260746_928681	209-31			Priority	0 SOUTHERN AVE REAR	DRINKWATER, RALPH W	6.98
M_260755_930364	139-6	Priority	High Priority	Critical Priority	0 GROVE ST	NADAI DEIRDRE TR/J EMERSON TR	29.16
M_260766_928752	209-30			Priority	0 SOUTHERN AVE	DRINKWATER, RALPH W	5.88
M_260787_928869	209-29			High Priority	1 LAUREL LN	DRINKWATER, RALPH W	12.56
M_260794_930582	139-4	Priority		High Priority	70 GROVE ST	TATTERSALL, ROBIN E	14.24
M_260840_929163	209-27			Priority	0 LAUREL LN	HALLORAN, GERARD	6.86
M_260843_929942	150-3			Priority	0 GIDEON WOOD & OTHERS	NADAI DEIRDRE TR/J EMERSON TR	5.64
M_260848_932145	122-4	High Priority		Priority	0 LUFKIN ST REAR	BENT NATALIE M	5.67
M_260875_931862	126-13	Critical Priority		Critical Priority	0 LUFKIN ST REAR	BENT NATALIE M	25.77

M_260916_933124	111-4	High Priority		High Priority	0 KILLAM ISLAND	OWNER UNKNOWN	14.04
M_260948_931541	126-29			Priority	25 LUFKIN ST	SCHIMOLER, JOHN J JR	5.28
M_260951_929747	150-8			Priority	0 LAUREL LN REAR	PENNOYER, CECILY	6.57
M_260974_929994	150-5			Priority	0 LAUREL LN REAR	DRINKWATER, RALPH W	5.84
M_260974_932219	122-6	High Priority		High Priority	0 LUFKIN CREEK MARSH	OWNER UNKNOWN	6.27
M_260986_929045	209-25			High Priority	0 LAUREL LN REAR	KNOWLTON, BRADFORD	7.44
M_260993_929667	150-9			Priority	0 LAUREL LN	HENDERSON, W PETER,	6.90
M_261020_932442	122-5	Critical Priority		Critical Priority	0 LUFKIN CREEK MARSH	OWNER UNKNOWN	43.97
M_261024_931986	126-19	Priority		High Priority	21 LEBARON RD	BENT, QUINCY	6.73
M_261026_930641	139-3		Priority	High Priority	0 GROVE ST REAR	MANSFIELD, PAMELA	16.49
M_261027_929587	209-11			Priority	0 LAUREL LN	BURNHAM, CHARLES A & MARIA P	5.73
M_261037_934441	204-21	High Priority		High Priority	0 GR BANK-OFF CONOMO PT	HART, MATTHEW	7.95
M_261044_930993	137-24	Priority	High Priority	Critical Priority	0 HASKELL CT	MILLS, DANIEL QUINN TR	53.17
M_261046_931255	137-14			Priority	147 EASTERN AVE	GALLAGHER, MARK	6.40
M_261111_928324	213-8		Critical Priority	Critical Priority	105 SOUTHERN AVE REAR	OWNER UNKNOWN	151.34
M_261125_929347	209-16		High Priority	Critical Priority	0 LAUREL LN REAR	DRINKWATER, RALPH W	34.86
M_261161_932077	126-20	Priority		Priority	0 OFF LUFKIN ST	MEYER PETER B	6.05
M_261163_931571	126-24			Priority	37 LUFKIN ST	STEINERT CORNELIA A & LUCY P	7.13
M_261180_931882	125-1	Priority		High Priority	44 LUFKIN ST	MEYER, PETER B	6.84
M_261224_928878	209-22			Priority	0 LAUREL LN	TOWN OF ESSEX	6.21
M_261270_932221	123-1	Critical Priority		Critical Priority	0 LUFKIN CREEK	FLETCHER, NINA M	25.15
M_261286_931915	125-2	Priority		Priority	48 LUFKIN ST	FLETCHER, NINA M	5.55
M_261301_929030	208-3			Priority	0 OFF LAUREL LN	UNKNOWN	6.46
M_261309_933332	110-2	Critical Priority		Critical Priority	0 CONOMO POINT RD	TOWN OF ESSEX	45.74
M_261313_928088	214-1			Priority	0 ROUTE 128	TOWN OF ESSEX	5.63
M_261319_932822	111-3	Critical Priority		Critical Priority	0 KILLAM ISLAND	OWNER UNKNOWN	49.45
M_261323_931147	138-19			Priority	159 EASTERN AVE	MILLS DANIEL QUINN TR	6.79
M_261327_931588	125-16			Priority	41 LUFKIN ST	BARKER, BRETON LAMONT	7.01
M_261374_928086	214-2			Priority	0 ROUTE 128	TOWN OF ESSEX	5.87
M_261390_931919	125-3	Priority		Priority	54 LUFKIN ST	SPINNEY ANDREW C TR	6.39
M_261432_928097	214-3			Priority	0 ROUTE 128	TOWN OF ESSEX	5.54
M_261437_931629	125-14			Priority	59 HARLOW ST	WARREN, HUGH L TR - WFLT	6.28
M_261452_928731	208-5			Priority	0 LAUREL LN REAR	DRINKWATER, RALPH W	6.34
M_261460_934804	205-1	High Priority		High Priority			15.87

M_261488_931933	125-4	Priority		High Priority	60 LUFKIN ST	WARREN, HUGH L TR - WFLT	7.97
M_261492_928096	214-4			Priority	0 ROUTE 128	TOWN OF ESSEX	5.86
M_261504_934272	206-1	Critical Priority		Critical Priority	0 CORN ISLAND & MARSH	EMERSON, J H COMPANY	42.16
M_261552_928109	214-5			Priority	0 ROUTE 128	COMMONWEALTH OF MASS	5.84
M_261556_932176	125-6	High Priority		Critical Priority	52 HARLOW ST	WARREN, HUGH L TR - HRT	21.02
M_261681_931622	125-10			High Priority	55 HARLOW ST	WARREN, HUGH L TR - WFLT	14.62
M_261688_932545	123-2			High Priority	0 CONOMO POINT RD	TOWN OF ESSEX	16.95
M_261702_932693	110-1	Priority		Priority	0 CONOMO POINT	KNOWLTON, BRADFORD	6.19
M_261807_934009	206-2	Critical Priority		Critical Priority	0 CROSS ISLAND	EMERSON, J H COMPANY	66.05
M_261876_933402	108-19	High Priority		High Priority	0 CONOMO POINT RD	TOWN OF ESSEX	11.20
M_261912_932161	123-8			Priority	0 CONOMO POINT RD	TOWN OF ESSEX	7.55
M_261923_932866	110-60	Priority		High Priority	0 CONOMO POINT RD	TOWN OF ESSEX	11.13
M_261951_933063	110-64	Priority		Priority	24 LUFKIN POINT RD	DUTTON ROBERT K, TRUSTEE	7.17
M_262019_932232	123-7			High Priority	1 CONOMO POINT RD	GERSH STEPHEN B & J ARISMAN TR	14.19
M_262029_932483	123-5			Priority	35 CONOMO POINT RD	FOWLER, SALLY W	6.21
M_262298_932677	109-31	Priority		High Priority	7 LUFKIN POINT RD	TORY A DAVID & HELEN TORY TR	8.15
M_262340_932889	109-20	High Priority		Priority	0 LUFKIN POINT	DONOVAN, JAMES F	6.97
M_262477_933512	206-3	High Priority		Priority			8.38