

A Quick Guide to Land Use in Massachusetts

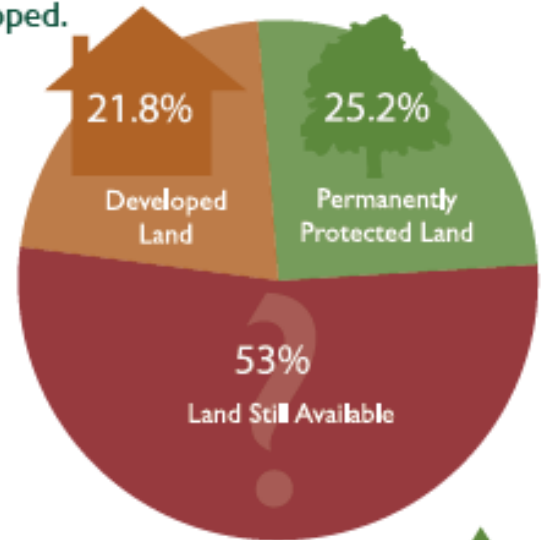
Recent Trends

During the period of 2005-2013,

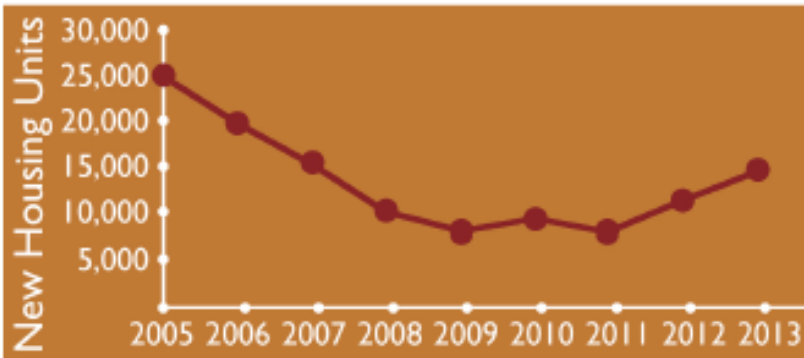
13 acres of land per day were **developed** (on average)

41 acres of land per day were **protected** (on average)

As of 2013, **over half** of the land in Massachusetts had not yet been protected or developed.



The rate of development plummeted during the recent **Great Recession**. Lately, however, **new housing permits** are on the rise.



Development Hot Spots

These 10 towns had the highest rates of development from 2005-2013:

Ayer	Northborough
Carver	Plainville
Dracut	Plympton
Hudson	Wareham
Lynnfield	
Methuen	

Planning for the Future

54% of the remaining unprotected land is of high conservation value. (BioMap 2)

As development pressures increase, we can plan our land use for both a strong economy and a safe, healthy environment.

For the full *Losing Ground: Planning for Resilience* report, interactive maps, and more, visit massaudubon.org/losingground

Learn where the most critical areas for conservation are – and where to site development away from them – with this mapping tool

Making Mapping Simple

three clicks to identifying priority parcels for conservation

MAPPR: Mapping And Prioritizing Parcels for Resilience

www.massaudubon.org/mappr

1

Select a study area

- Town, county, or watershed
- *Coming soon: Land Trust Region and regional planning agency region*

2

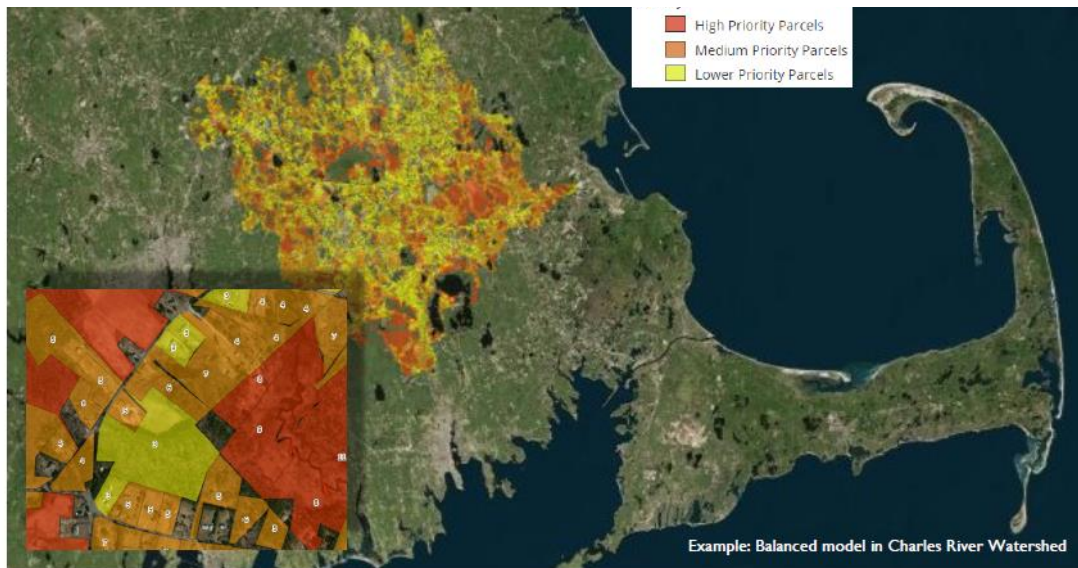
Choose model/values

- Choose a pre-calculated model (balanced, resilience, aquatic, or biological) OR
- Choose specific model values

3

Run & Review Results

- Review results, including priority scoring and parcel ownership
- Adjust optional filters and constraints



Get more tips for becoming involved with open space protection in your community with our *Shaping the Future of Your Community* Guidebook at: www.massaudubon.org/shapingguidebook



For more information on sustainable development and our work with communities, visit: www.massaudubon.org/shapingthefuture or contact Stefanie Covino at scovino@massaudubon.org