



Greenbelt Destinations to Explore at Your Own Pace

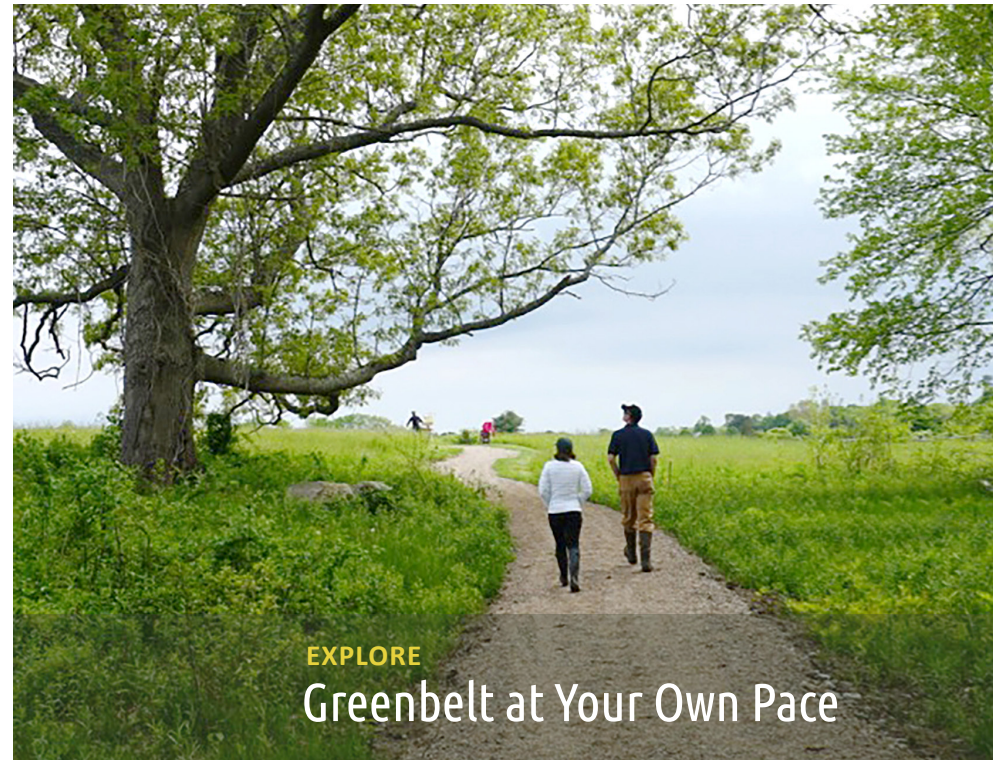
- | | | |
|------------------------|-------------------------|------------------------|
| 1. Allyn Cox | 8. Castle Neck River | 15. Newman Farm Meadow |
| 2. Alt | 9. Echo/Elizabeth How | 16. Pikes Bridge Road |
| 3. Arthur Ewell | 10. Elmlea Woods | 17. River Road |
| 4. Bailey | 11. Hans Morris | 18. Rough Meadows |
| 5. Baypoint Riverfront | 12. Julia Bird | 19. Sally Weatherall |
| 6. Beaver Pond | 13. Kamon Farm | 20. Seine Field |
| 7. Beverly Commons | 14. Mehaffey Farm Trail | 21. Vineyard Hill |



Essex County Greenbelt
82 Eastern Avenue
PO Box 1026
Essex, MA 01929

978 768 7241
ecga@ecga.org

ecga.org



For nature enthusiasts who enjoy gentle strolls and lovely views, Greenbelt's here for you.

Get a breath of fresh air, watch wildlife and relax on our conservation land. Enjoy short, gently-graded trails, peaceful viewing platforms, and scenic places to rest.

Greenbelt properties are free and open to all, from dawn to dusk daily.



DAVID ALDEN-ST.PIERRE



JERRY MONKMAN/ECOPHOTOGRAPHY.COM

Protecting land and nature for you, our communities and the future

EXPLORE

Greenbelt at Your Own Pace

Many Greenbelt properties offer short, gently-graded trails to get outside and enjoy nature – whether starting out with young children or maintaining an active, outdoor lifestyle over the years.

Gentle Strolls

Mainly flat or gently-sloping, wide, firm trails with packed gravel or crushed stone sections.

Easy Walks

Mostly level, gently-sloping trails with slight inclines and occasional unevenness.

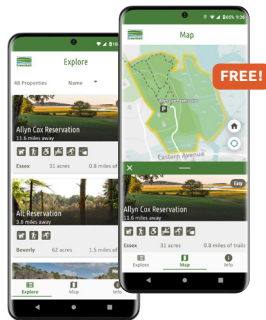
Moderate Hikes

Gradually-sloping, rolling trails with occasional roots, rocks, ruts.

Woods Roads consist of packed gravel or dirt paths with vegetation in the middle. They are common on these trails.



GreenbeltGo
Real-time Trail Location



FREE TRAILS APP!

Maps, History, Directions
[Download Here](#)



TRAIL MAPS
ecga.org/gentletrails

Print maps before you head out



Gentle Strolls



DAVID POWELL



Allyn Cox

ESSEX 31 Acres

Flat and gently-rolling trails, tidal estuary, expansive Great Marsh views from platform

Trail follows a packed gravel road and leads to the banks of the Essex River estuary.

Nature enthusiasts, dog walkers, artists and birders visit throughout the seasons to enjoy stunning salt marsh views and wildlife habitat.

Osprey platforms visible.

Packed gravel, grass, woodland, boardwalk

Viewing platform, multiple benches

Greenbelt Headquarters, ample parking

82 Eastern Avenue
Essex, MA 01929



Arthur Ewell

ROWLEY 31 Acres

Short walk along flat trail leads to bench overlooking riding club field, then into woods with lovely views of Upper Mill Pond

Lower trails along the pond beckon the more adventurous visitor with inclined banks.

A prime location to enjoy the splendor of waterfowl during spring migration when ducks are courting. Look for signs of otter and beaver around the pond.

Grass, woodland, boardwalk

Bench

Heads-up: Keep an eye out for signs of beaver activity on the pond

Near 851 Haverhill Street
Rowley, MA 01969

Castle Neck River

IPSWICH 32 Acres

Winding, gently-sloping, packed gravel trail, bench atop knoll with sweeping hayfield views

Trails continue through gently-rolling fields and transition to woods on the upper reaches of the Castle Neck River.

Fields invite birders to enjoy nesting Bobolinks and Eastern meadowlarks from May through July.

Packed gravel, grass, woodland, boardwalk

Bench

Heads-up: eBird hotspot, lower fields can be soggy

107 Essex Road
Ipswich, MA 01938



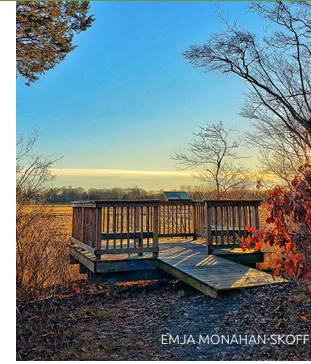
ADRIAN SCHOLES



MARC FRIGON



EMJA MONAHAN-SKOFF



EMJA MONAHAN-SKOFF



KIM SMITH

Elmlea Woods

BOXFORD 42 Acres

Flat, wide open trails and woods roads wind through woodlands and wetlands

Located in the Boxford Common recreational area, the hardwood and white pine forest offers trails to explore at many levels.

For the more active visitor, trails are great for biking, snowshoeing and cross country skiing.

Woods road, boardwalk bridge

Bench

Heads-up: Boxford Common parking area, use marked spaces only

Captain Cashin Way
Boxford, MA 01921

Kamon Farm

IPSWICH 95 Acres

Short, packed gravel path leads to bench overlooking expansive fields, with grassy trail continuing along field edge

For a longer excursion, continue through the woods to the Turkey Hill Conservation Area.

Host to a diversity of wildlife, this land straddles two watersheds, helping to protect local drinking water supplies.

Packed gravel, woods road, woodland

Benches

Heads-up: Furthest trail sections can be soggy; great spot for birding

81 Pineswamp Road
Ipswich, MA 01938

Newman Farm Meadow

NEWBURY 4 Acres

Wide, flat grassy loop follows perimeter of field and pastureland

Historic stone walls and hedgerows line the fields.

Newbury Lower Green and the surrounding pastoral landscape were listed by Preservation Massachusetts as one of the State's most-threatened historic sites in 2010.

Grass

Benches

Heads-up: Great spot for lunch, carry-in carry-out

Parking at trailhead only

Lower Green Road
Newbury, MA 01951

Rough Meadows

ROWLEY 266 Acres

Wildlife Sanctuary's level trails lead through coastal woodlands to expansive marshland views

The viewing platform and Kestral trail loop offer panoramic views of the Great Marsh.

If time allows, continue down Patmos Road by car or foot to enjoy more stunning views from Sawyer's Island, about a mile from the parking area.

Woods road, grass, dirt and gravel road

Viewing platform/bench

Heads-up: Co-managed by Mass Audubon, dogs prohibited; trail is tide dependent after platform

Off Stackyard Road/1A
Patmos Road
Rowley, MA 01969 

Sally Weatherall

IPSWICH 60 Acres

Short, wide path to viewing platform with sweeping marsh views

Look for egrets and herons feeding on the vast salt marsh or observe migrating waterfowl from the platform just steps from the parking area.

The short path is lined with junipers, bayberry bushes, cedar and honeysuckle.

Osprey platform visible.

Woodland

Viewing platform/bench

Dedicated to one of Greenbelt's first executive directors, a tireless land conservation advocate.

8 Little Neck Road
Ipswich, MA 01938

Seine Field

GLOUCESTER 16 Acres

Level, packed gravel path, welcomes visitors with a range of mobilities

This quarter-mile trail loop meanders through fields that local fishermen use to dry their seine nets.

A designated Important Bird Area, located on Eastern Point, this property can be reached via a request stop on the Cape Ann Transportation Authority (CATA) bus route.

Packed gravel, grass

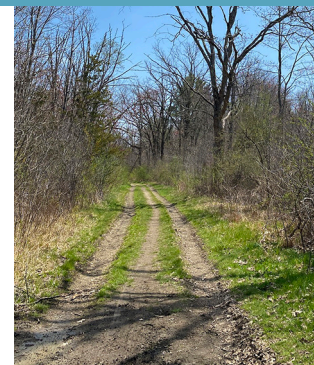
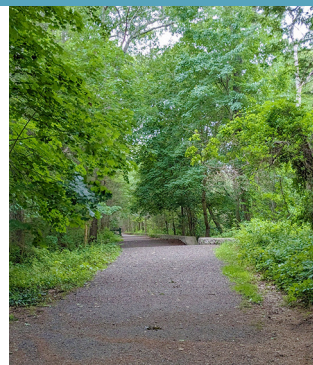
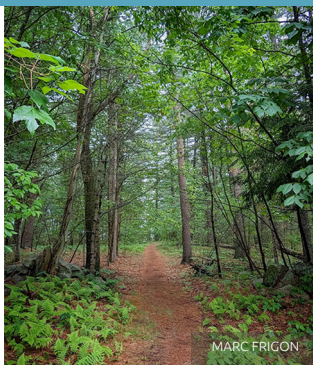
Multiple benches

Heads-up: Wheelchair friendly

Request stop: CATA Bus, Thatcher Road Route



46 Farrington Avenue
Gloucester, MA 01930



Alt

BEVERLY 62 Acres

A relatively flat, rolling woodland trail through oak and pine forest

Head straight through the woodland to a spot with lovely views across a white cedar swamp, known as Beaver Pond.

A patchwork of former pastures dating back to the early 1900s, Alt’s stone walls once served as pasture borders.

Woods road, woodland, boardwalk

Bench

Heads-up: Ample off-street parking

Near 85 Grover Street, Beverly, MA 01915

Bailey

HAVERHILL 22 Acres

Short, gently-sloping woodland trail loop, with Chadwick Pond beyond

Trail loop leads past scenic pond overlooks; unmistakable signs of beaver activity make this a fun spot to take kids.

In summer, the pond and adjacent wetland are covered in a thick mat of lily pads that present white flowers in July and August.

Woodland

Heads-up: Rocks make trail uneven in places

Parking area is a short distance from Kingbury Avenue

474 Kingsbury Avenue Haverhill, MA 01835

Beverly Commons

BEVERLY 409 Acres

A short, flat trail section leads from Greenwood Avenue entrance, through the woodland

A mosaic of land protected by the City of Beverly and Greenbelt features impressive rock outcroppings and glacial boulders.

The longer, extensive trail network is popular with mountain bikers and trail runners.

Packed gravel, woods road, woodland, bridges, boardwalks

Heads-up: Easy entrance from Greenwood Avenue

Greenwood Avenue & Stoneridge Circle Beverly, MA 01915

Echo & Elizabeth How

IPSWICH 50 Acres

A relatively flat, rolling woodland trail leads to large beaver pond, vast wetlands

Enjoy an out-and-back to the scenic viewpoint overlooking the beaver pond and wetlands.

A mixed hardwood forest populated with mature trees and wide trails lined with ferns and old stone walls.

Woodland

Heads-up: Gradual incline near beginning of trail

Near 398 Linebrook Road Ipswich, MA 01938

Hans Morris

NEWBURY 25 Acres

Flat, mowed trail meanders through an expansive grassland bird meadow

Further on, a boardwalk crosses a meandering stream, separating the grassland field from an undulating trail through a mixed hardwood/conifer woodland.

Property abuts the Martin Burns Wildlife Management Area.

Grass, boardwalk, woodland

Heads-up: Keep an eye out for multiple birdhouses

Near 110 Middle Road Newbury, MA 01951

Pikes Bridge Road

WEST NEWBURY 93 Acres

Straight, flat, wide woods road known as “Warbler Alley” is a legendary birding location along the Artichoke Reservoir

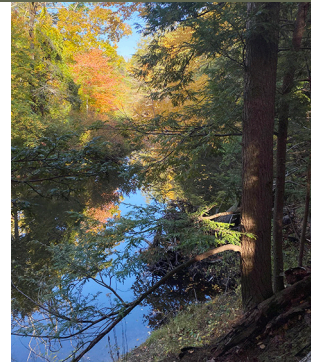
Continue on through undulating woodlands to a grassland habitat full of summer wildflowers.

If time permits, this property connects to the expansive Indian Hill Farm and South Street Woodlots.

Woods road, woodland, grass

Heads-up: Part of the West Newbury “Emerald Necklace”

Turkey Hill Road West Newbury, MA 01985



Vineyard Hill

HAMILTON 139 Acres
TOPSFIELD

Wide, winding woodland trail meanders through hardwood forest, and along fields

The easier Shaw Field loop takes visitors into the forest, then skirts the perimeter of the field.

The more challenging Vineyard Hill loop, leads up and over a steep drumlin, a classic glacial landscape. Cross an old stone bridge before the hill rises.

Woodland, woods road, stone bridge, grass

Picnic Table, bench

Heads-up: Hiking poles can help with the steeper Vineyard Hill trail

656 Asbury Street
So. Hamilton, MA 01982

Baypoint Riverfront

HAVERHILL 15 Acres

Wide, flat upper trail, nice for a stroll through the woods

This small neighborhood green space offers beautiful views and protects the shoreline of the Merrimack River.

A popular spot for recreation, dog walking and fishing.

This property is a wintering habitat for Bald Eagles.

Woodland

Bench

Heads-up: The banks to the river's edge are steep and should be avoided

Riverdale Ave
near Bay Point Lane
Haverhill, MA 01835

Beaver Pond

MERRIMAC 39 Acres

Footpaths lead to views of a stunning beaver pond nestled in the Merrimack Town Forest

Continue towards the pond's edge for a more adventurous hike.

Cobbler's Brook winds its way through mature woodlands and boggy wetlands, engaging birders and hikers year-round.

Woodland, woods road

Heads-up: Steep trail section to water's edge

20 Battis Road
Merrimac, MA 01860

Julia Bird

IPSWICH 59 Acres

Mainly flat network of forest and fields with trails along the Ipswich River

A meandering, hemlock-shaded stretch of river frontage provides beautiful overlooks.

The front field is maintained for polo practice, and the rear field is used for equestrian carriage driving.

Woodland, woods road

Bench

Heads-up: Descending steps at entrance to property

Waldingfield Road
near railway bridge
Ipswich, MA 01938

Mehaffey Farm Trail

ROWLEY 28 Acres

Rolling woodland trail meanders through mature hardwood forest with views of a wetland and beaver pond

This trail is located on private property and public access is not permitted off the trail.

Make a day of it, the trail connects to the adjacent Willowdale State Forest.

Woodland

Heads-up: The landowner may close the trail from time to time during land management activities.

Opposite 212 Newbury Rd
Rowley, MA 01969

River Road

WEST NEWBURY 33 Acres

Rising up from the Merrimack River, trail offers views of the river, and a mix of woodland and stream.

After an initial short incline, a forested double-loop trail crosses wetlands on sturdy boardwalks.

Old stone walls meander through a small birch grove on the upper trail loop.

Woodland, boardwalk

Bench overlooking river

Heads-up: Short, steep incline at start of trail, consider hiking poles

Near 225 River Road
West Newbury, MA 01985

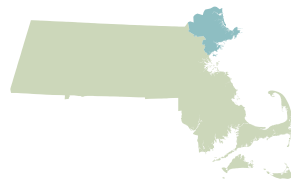


Greenbelt protects natural land and working farms across Essex County forever, helping to conserve healthy ecosystems, clean water, local food supplies, scenic landscapes and free, accessible places for all to benefit from nature.



Greenbelt works within the 34 cities and towns of Essex County, Massachusetts helping individuals, families, municipalities and organizations realize their land conservation goals.

LEARN MORE
ecga.org



Before You Go, Good to Know

All Greenbelt trails are **FREE** and open to all.

- Download or print maps prior to exploring: ecga.org/trails, GreenbeltGo Trails App
- Wear appropriate footwear, as trails can be muddy, wet or icy
- Consider bringing hiking poles, hat, bug spray, sunscreen
- Bring binoculars if you have a pair!
- Carry out what you carry in
- Pick up after your pets
- Open between sunrise and sunset
- Respect our neighbors' privacy
- Motor vehicles prohibited



Kamon Farm | IPSWICH

Get Outside with our Greenbelt Guide!

EXPLORE WITH US
ecga.org/trails

Handheld Guide with removable maps are available for purchase at the Greenbelt office.



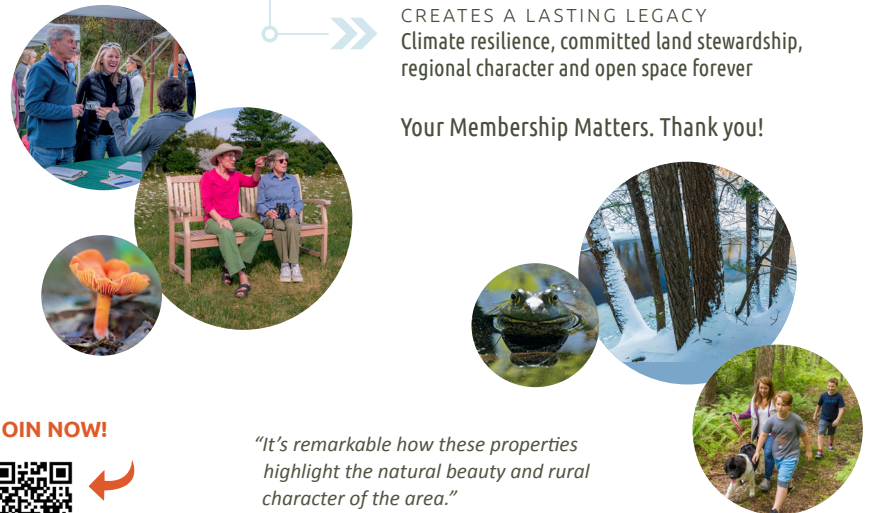
Greenbelt Membership

JOIN ONLINE
ecga.org/membership

Your Membership

- ▶▶ **BUILDS COMMUNITY**
Life-long learners, nature lovers and outdoor enthusiasts
- ▶▶ **PROTECTS LOCAL LAND**
Wildlife habitat, clean water and air, trails, farms and beautiful places for all to enjoy
- ▶▶ **CREATES A LASTING LEGACY**
Climate resilience, committed land stewardship, regional character and open space forever

Your Membership Matters. Thank you!



JOIN NOW!



"It's remarkable how these properties highlight the natural beauty and rural character of the area."

- Marc Frigon
Greenbelt trails hiker