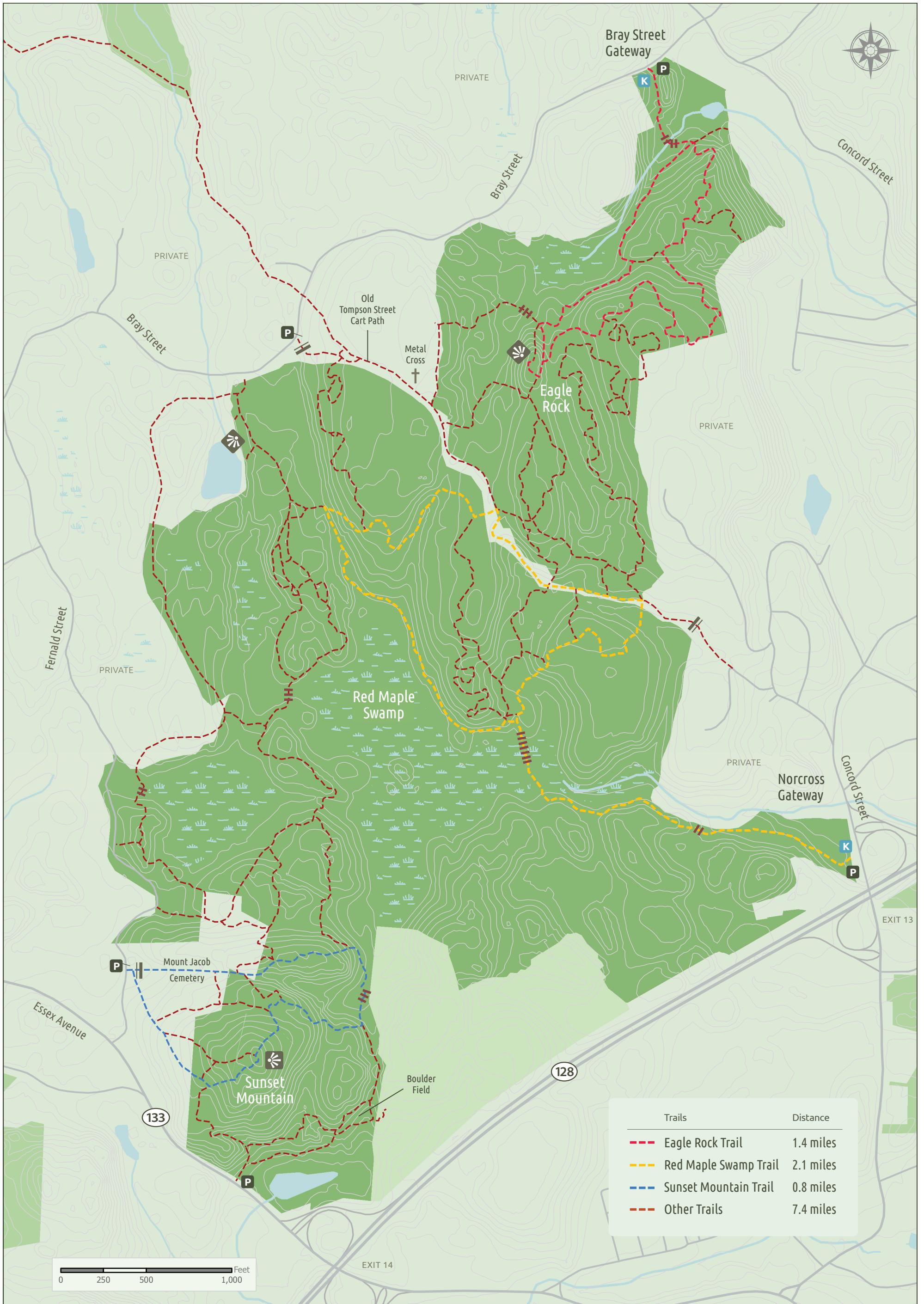


Tompson Street Reservation

Gloucester

320 Acres

- Reservation
- Greenbelt Protected Land
- Other Protected Land
- Water
- Wetlands
- Stream
- Boardwalk
- Gate
- Parking
- Kiosk
- Scenic Viewpoint
- Road
- Contour (3m)



Trails	Distance
--- Eagle Rock Trail	1.4 miles
--- Red Maple Swamp Trail	2.1 miles
--- Sunset Mountain Trail	0.8 miles
--- Other Trails	7.4 miles

Note: Tompson Street trail loops are marked in the field. Due to numerous small foot paths throughout Tompson Street, there are more trails on this property than shown on this map.

Source data obtained from the Office of Geographic Information Systems (Mass GIS), survey plans, and global positioning systems (GPS). Boundaries are approximate. Map produced by Essex County Greenbelt Association, 2014.