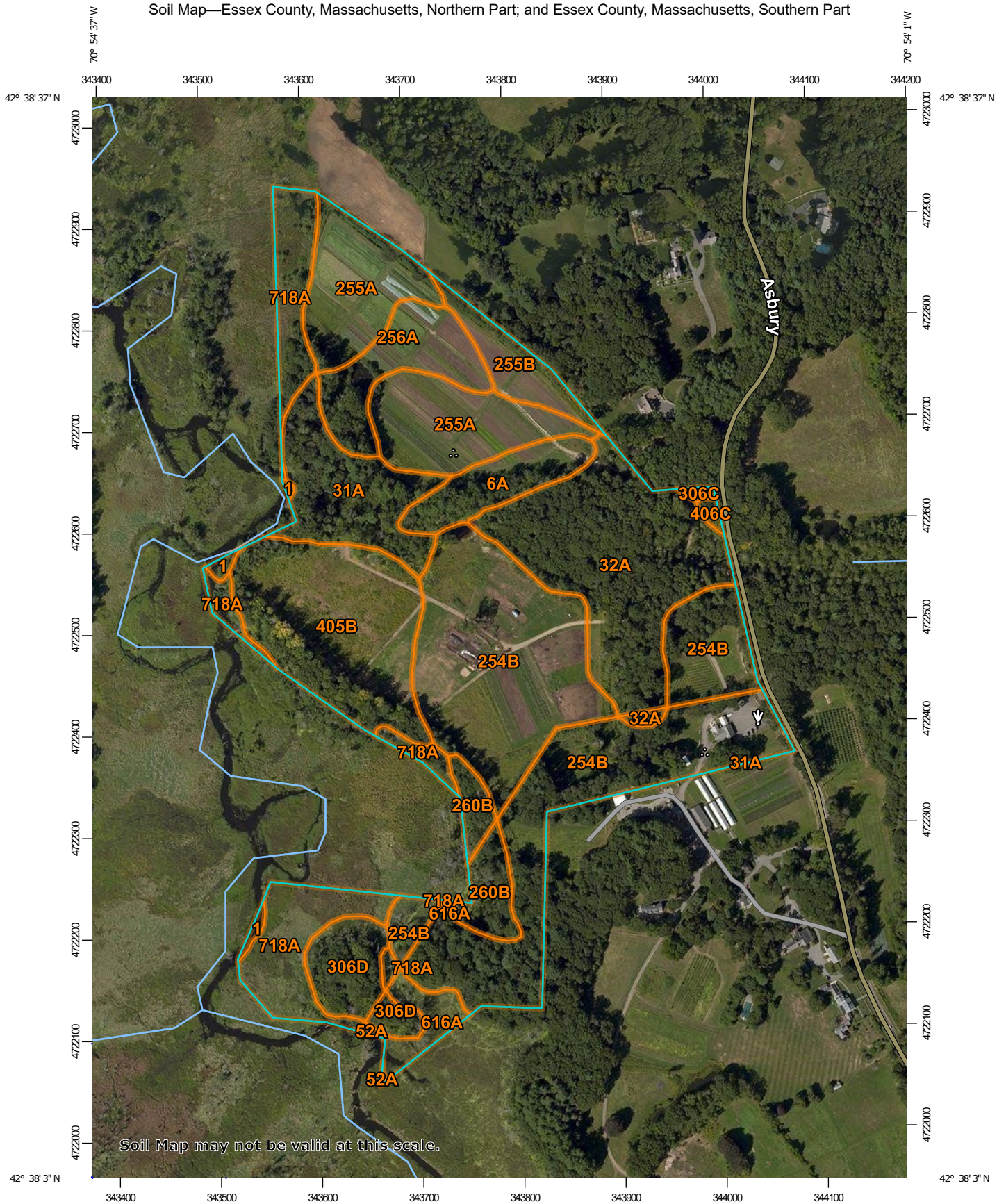
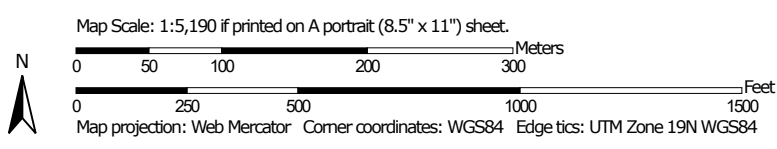


Soil Map—Essex County, Massachusetts, Northern Part; and Essex County, Massachusetts, Southern Part




Soil Map may not be valid at this scale.



## MAP LEGEND

### Area of Interest (AOI)

 Area of Interest (AOI)

### Soils

 Soil Map Unit Polygons

 Soil Map Unit Lines

 Soil Map Unit Points

### Special Point Features



Blowout



Borrow Pit



Clay Spot



Closed Depression



Gravel Pit



Gravelly Spot



Landfill



Lava Flow



Marsh or swamp



Mine or Quarry



Miscellaneous Water



Perennial Water



Rock Outcrop



Saline Spot



Sandy Spot



Severely Eroded Spot



Sinkhole



Slide or Slip



Sodic Spot



Spoil Area



Stony Spot



Very Stony Spot



Wet Spot



Other



Special Line Features

### Water Features



Streams and Canals

### Transportation



Rails



Interstate Highways



US Routes



Major Roads



Local Roads

### Background



Aerial Photography

## MAP INFORMATION

The soil surveys that comprise your AOI were mapped at 1:15,800.

**Warning:** Soil Map may not be valid at this scale.

Enlargement of maps beyond the scale of mapping can cause misunderstanding of the detail of mapping and accuracy of soil line placement. The maps do not show the small areas of contrasting soils that could have been shown at a more detailed scale.

Please rely on the bar scale on each map sheet for map measurements.

Source of Map: Natural Resources Conservation Service  
Web Soil Survey URL:  
Coordinate System: Web Mercator (EPSG:3857)

Maps from the Web Soil Survey are based on the Web Mercator projection, which preserves direction and shape but distorts distance and area. A projection that preserves area, such as the Albers equal-area conic projection, should be used if more accurate calculations of distance or area are required.

This product is generated from the USDA-NRCS certified data as of the version date(s) listed below.

Soil Survey Area: Essex County, Massachusetts, Northern Part  
Survey Area Data: Version 15, Sep 12, 2019

Soil Survey Area: Essex County, Massachusetts, Southern Part  
Survey Area Data: Version 16, Sep 13, 2019

Your area of interest (AOI) includes more than one soil survey area. These survey areas may have been mapped at different scales, with a different land use in mind, at different times, or at different levels of detail. This may result in map unit symbols, soil properties, and interpretations that do not completely agree across soil survey area boundaries.

Soil map units are labeled (as space allows) for map scales 1:50,000 or larger.

Date(s) aerial images were photographed: Aug 29, 2014—Sep 19, 2014

## MAP LEGEND

## MAP INFORMATION

The orthophoto or other base map on which the soil lines were compiled and digitized probably differs from the background imagery displayed on these maps. As a result, some minor shifting of map unit boundaries may be evident.



## Map Unit Legend

Map Unit Symbol	Map Unit Name	Acres in AOI	Percent of AOI
1	Water	0.2	0.4%
6A	Scarboro mucky fine sandy loam, 0 to 3 percent slopes	2.0	3.3%
31A	Walpole sandy loam, 0 to 3 percent slopes	3.7	6.1%
32A	Wareham loamy sand, 0 to 3 percent slopes	8.0	13.2%
254B	Merrimac fine sandy loam, 3 to 8 percent slopes	11.1	18.2%
255A	Windsor loamy sand, 0 to 3 percent slopes	6.6	10.9%
255B	Windsor loamy sand, 3 to 8 percent slopes	1.5	2.4%
256A	Deerfield loamy fine sand, 0 to 3 percent slopes	2.8	4.5%
260B	Sudbury fine sandy loam, 3 to 8 percent slopes	0.6	1.0%
306C	Paxton fine sandy loam, 8 to 15 percent slopes, very stony	0.1	0.1%
306D	Paxton fine sandy loam, 15 to 25 percent slopes, very stony	1.6	2.7%
405B	Charlton fine sandy loam, 3 to 8 percent slopes	6.7	11.0%
406C	Charlton fine sandy loam, 8 to 15 percent slopes, very stony	0.1	0.2%
718A	Saco variant silt loam, 0 to 3 percent slopes	5.2	8.6%
<b>Subtotals for Soil Survey Area</b>		<b>50.2</b>	<b>82.7%</b>
<b>Totals for Area of Interest</b>		<b>60.6</b>	<b>100.0%</b>

Map Unit Symbol	Map Unit Name	Acres in AOI	Percent of AOI
31A	Walpole sandy loam, 0 to 3 percent slopes	0.0	0.0%
32A	Wareham loamy sand, 0 to 3 percent slopes	0.1	0.2%
52A	Freetown muck, 0 to 1 percent slopes	0.1	0.1%
254B	Merrimac fine sandy loam, 3 to 8 percent slopes	7.8	12.9%
260B	Sudbury fine sandy loam, 3 to 8 percent slopes	1.1	1.8%

Map Unit Symbol	Map Unit Name	Acres in AOI	Percent of AOI
306D	Paxton fine sandy loam, 15 to 25 percent slopes, very stony	0.4	0.7%
616A	Fluvaquents, frequently flooded, 0 to 3 percent slopes	1.0	1.6%
<b>Subtotals for Soil Survey Area</b>		<b>10.5</b>	<b>17.3%</b>
<b>Totals for Area of Interest</b>		<b>60.6</b>	<b>100.0%</b>